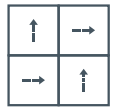


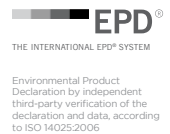
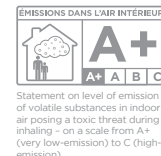
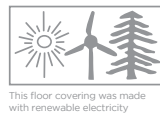
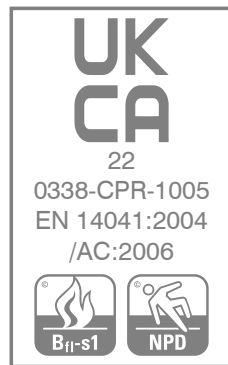
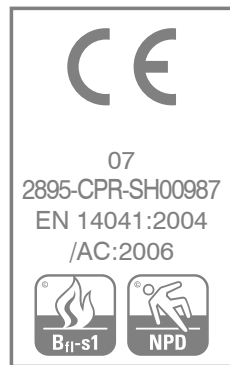
technical specifications

Product Name	Cordiale
Product Description	Fibre Bonded
Pile Yarn Description	85% Polypropylene 15% Nylon
Tile Dimension	50cm x 50cm
Pile Weight	950g/m ²
Total Weight	4200g/m ²
Total Thickness	7.8mm
Backing Description	Accummen™, 75% recycled
Wear Classification	Heavy Contract
Flammability	Euroclass Bfl-s1
Thermal Resistance	Tog Rating 0.84; ISO 8302: 0.10 m ² K/W
Castor Chair Rating	BS EN 985 Pass - suitable for continuous use
Static Loading	BS 4939:1987 (2003) Recovery >80% (24hrs)
Dynamic Loading	BS ISO 2094:1999 (2005) Loss <20% (1000 impacts)
Body Voltage Test	BS ISO 6356:2000 <2kV
Colour Fastness To Light	BS EN ISO 105 - B02 Minimum grade 6
Colour Fastness To Shampoo	BS 1006:UK-TB: 1990 Minimum Grade 4
Reduction in Impact Noise	BS EN ISO 140-8: Part 8: 1998 18dB
Reduction in Impact Noise at 1000Hz	BS EN ISO 140-8: Part 8: 1998 16.1dB
Number of Tiles per Box	20 (5m ²)

For best results we recommend



Quarter Turn



environmental information

- Burmatex® products are EPD verified by an independent third-party verification of the declaration and data, according to ISO 14025:2006. For specific ratings, please refer to www.environdec.com
- Burmatex® products qualify for SKA as they achieve one or more requested criteria
- Burmatex® products can contribute to the WELL Building Standard™, which focuses on the people and healthy workplaces
- All Burmatex® carpet/carpet tile/carpet plank ranges are made at its single UK manufacturing site
- Wherever possible, raw materials including yarn/fibre are sourced locally i.e. within 20 miles
- 77% of Burmatex® BioBase™ backing comes from recycled materials
- Continuous assessment and improvement of manufacturing process to minimise use of raw materials/power
- All manufacturing waste is recycled and all electricity used is from renewable resources
- All Burmatex® products are heavy contract with a 10 year guarantee for maximum useful life
- Certified, Class A+: very-low VOC Emission

LEED® v4 - Burmatex® products can contribute towards satisfying the following credits for LEED v4: NC-v4/CI-v4 MRC2/MRC3 (Building product disclosure and optimization - environmental product declarations), MRC3/MRC4 (Building product disclosure and optimization - sourcing of raw materials), EQc1 (Enhanced indoor air quality strategies), EQc2 (Low-emitting materials), EQc6 (Interior lighting - Option 2. Lighting quality (E - H)) and EQc9 (Acoustic Performance). Products are not reviewed under LEED. LEED credit requirements cover the performance of materials in aggregate, not the performance of individual products or brands. For more information on LEED, visit www.usgbc.org/contact

Burmatex Ltd
Victoria Mills, The Green
Ossett, West Yorkshire
WF5 OAN
United Kingdom

T +44 (0) 1924 262 525
F +44 (0) 1924 280 033
UK email: projects@burmatex.co.uk
International email: international@burmatex.co.uk
www.burmatex.co.uk

Burmatex® reserves the right to improve the specification of all products without prior notification. E&OE

Burmatex® carpets and carpet tiles should be installed and used in full accordance with instructions at www.burmatex.co.uk and recognised trade standards.

Orders are subject to Burmatex® terms and conditions of sale. See: www.burmatex.co.uk

LRV values for cordiale

Product code	Product colour name	CIE Y	CIE L
12101	indian ebony	2.35	17.21
12102	danish charcoal	3.19	20.78
12103	netherlands slate	6.07	29.60
12104	german steel	9.05	36.08
12105	canadian diamond	11.70	40.73
12107	czech blue	2.73	18.92
12108	icelandic sea	5.19	27.28
12111	andorran blue	3.49	21.89
12112	portuguese purple	3.15	20.64
12113	luxembourg lavender	5.32	27.62
12114	english blue	3.79	22.97
12117	norwegian fjord	5.83	28.97
12119	swiss ice	8.23	34.46
12122	chinese turquoise	5.02	26.80
12123	greek jade	7.12	32.08
12125	monaco marina	6.59	30.85
12130	lithuanian lime	8.83	35.65
12131	cuban rum	3.02	20.14
12132	belgian beige	8.50	35.00
12134	latvian honey	13.24	43.12
12139	ukrainian orange	10.09	38.01
12143	chilean wine	3.76	22.86
12151	spanish sunset	4.27	24.55
12180	japanese indigo	3.20	20.83
12181	russian blue	6.67	31.04
12182	brazilian sky	9.40	36.75
12183	colombian emerald	4.97	26.66
12184	australian violet	2.71	18.84
12185	hungarian paprika	4.52	25.32
12186	cambodian silk	4.77	26.07
12187	bolivian gold	13.47	43.46
12188	costa rican sun	16.75	47.94